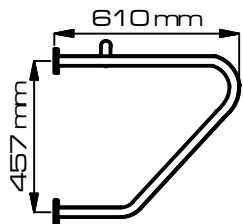
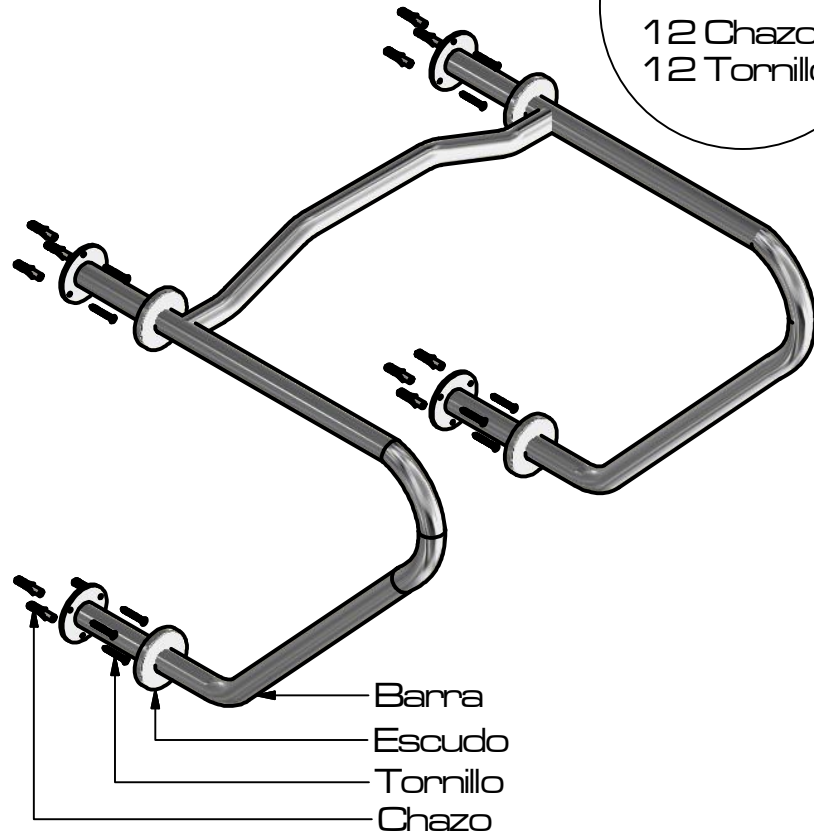
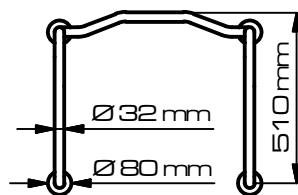


INCLUYE

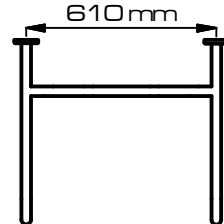
12 Chazos
12 Tornillos



Vista lateral derecha

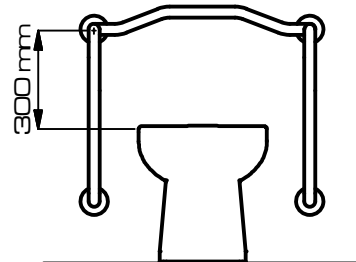


Vista frontal



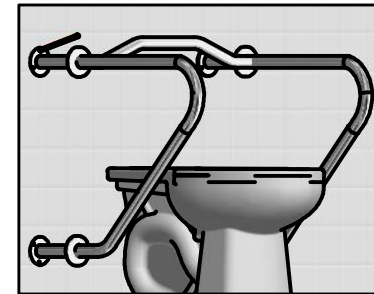
Vista superior

1 - Anche la barra a una altura de la taza de 300 mm.



Piso terminado.

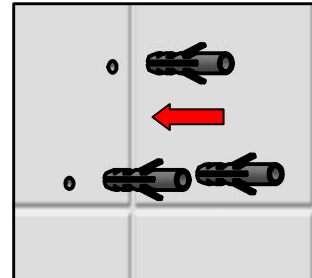
2 - Marque los agujeros.



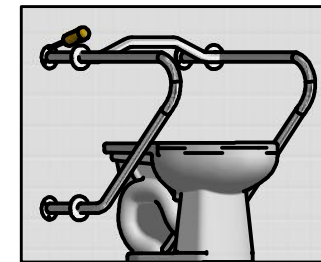
3 - Realice las perforaciones.



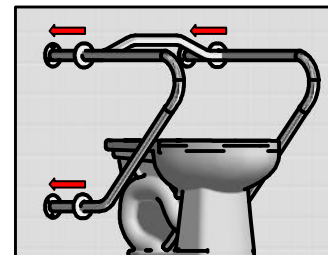
4 - Introduzca los chazos.



5 - Monte la barra y ajústela con los tornillos.



6 - Deslice los escudos.



Instalación Finalizada.

